

EMBARGOED UNTIL RELEASE AT 8:30 A.M. EDT, THURSDAY, JUNE 7, 2007

Technical: Clifford Woodruff (202) 606-9234

BEA 07-24

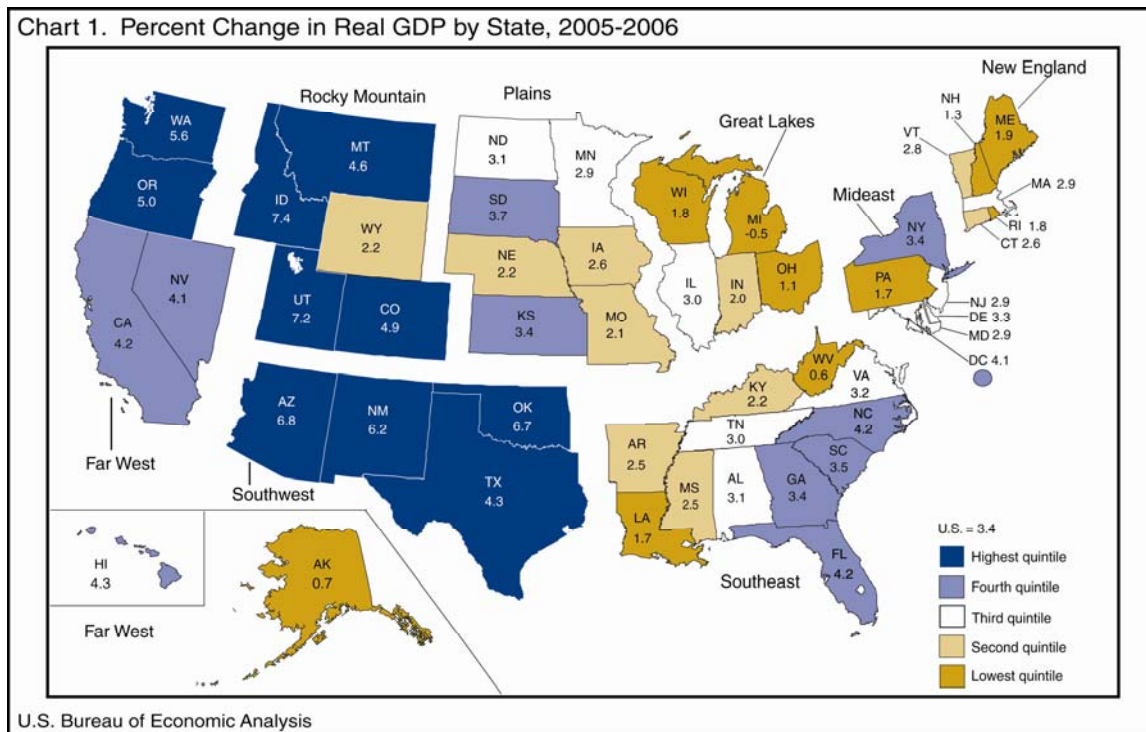
Media: Ralph Stewart (202) 606-2649

E-Mail inquiries: gdpbystate@bea.gov

STATE ECONOMIC GROWTH WIDESPREAD IN 2006

Advance 2006 and Revised 2003-2005 GDP-by-State Estimates

Newly available data on the state distribution of real GDP growth confirm that economic growth was widespread in 2006, as GDP grew in all states except Michigan, according to estimates released today by the U.S. Bureau of Economic Analysis.¹ Growth accelerated for the nation and most states compared with 2005. The ten fastest-growing states are all in three western regions—Rocky Mountain, Southwest or Far West.



This release provides NAICS-sector estimates only 6 months after the calendar year for the first time—a 4-month acceleration from previous release schedules.² It completes the acceleration of the GDP-by-state estimates.

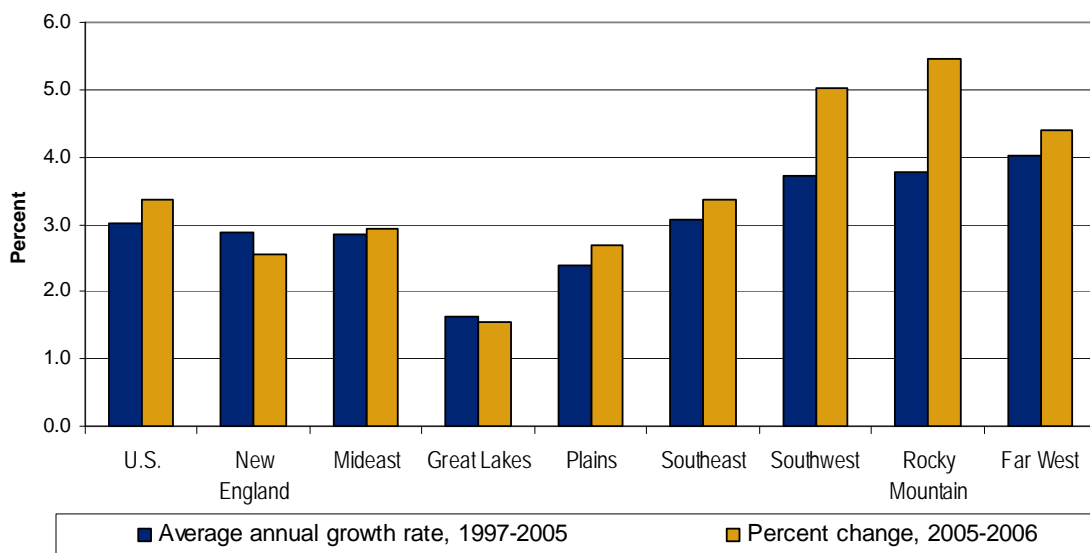
¹ See the “Advance Estimates of GDP by State for 2006 by NAICS Sector” section of this release for a detailed description of these estimates.

² NAICS North American Industry Classification System. NAICS sectors comprise the highest level of aggregation of the system and represent general categories of economic activities.

Highlights for 2006

- The U.S. growth in real GDP by state was faster than the 1997-2005 average annual rate; six of the eight BEA regions experienced faster growth as well (chart 2).
- Growth in the private services-producing sector was strong in nearly all states and continued to account for most growth.
- Four of the fastest-growing states—Arizona, Idaho, Utah, and Washington—were also among the fastest-growing states in 2005.
- Delaware had the highest per capita real GDP. The five states with the highest per capita real GDP are all in two eastern regions—New England or Mideast.

Chart 2. Growth Rates in Real GDP by State, 1997-2006*



* Advance estimates

Source: U.S. Bureau of Economic Analysis

NAICS-Sector Growth in 2006

The private services-producing sector continued to account for most of the growth both nationally and regionally in 2006.³ The real estate, rental, and leasing sector was the largest contributor to growth in all BEA regions except the Southwest. Additionally, this sector was the largest contributor to growth for 23 states and the District of Columbia.

Growth in the private services-producing sector was strong in nearly all states; the fastest-growing states tended to be those with strong growth in the private goods-

³ The private services-producing sector consists of utilities; wholesale trade; retail trade; transportation and warehousing, excluding Postal Service; information; finance and insurance; real estate, rental, and leasing; professional and technical services; management of companies; administrative and waste services; educational services; health care and social assistance; arts, entertainment, and recreation; accommodation and food services; and other services, except government.

producing sector as well.⁴ Idaho had the fastest growth of all states in 2006 (7.4 percent), with the durable goods manufacturing sector accounting for 31 percent of the growth. For the fastest-growing states of New Mexico, Oregon, and Texas, durable goods manufacturing accounted for more than 20 percent of growth. For Oklahoma, another of the fastest-growing states, mining accounted for 31 percent of growth. Michigan was the only state to decline in 2006 (-0.5 percent) due to declines in many sectors, particularly construction.

Per Capita Real GDP by State for 2006

Delaware led the nation with the highest per capita real GDP of \$59,288. This is 57 percent above the national average. Delaware's ranking can be tied to its large concentration in the finance and insurance sector, a highly capitalized sector in this state. The second highest-ranked state was Connecticut at 33 percent above the national average. The top ten states were all ranked in the top ten in 2005, although several states traded places.

Mississippi's per capita real GDP by state of \$24,062 was the lowest in the nation. This is 36 percent below the national average. The bottom ten states were all ranked in the bottom ten in 2005, although several states traded places.

Per Capita Real GDP by State, 2006*

States with the highest per capita				States with the lowest per capita			
	Per capita real GDP by state (dollars)	Rank in the U.S.	Percent of the U.S.		Per capita real GDP by state (dollars)	Rank in the U.S.	Percent of the U.S.
United States	37,714	100	United States	37,714	100
Delaware	59,288	1	157	Idaho	30,896	41	82
Connecticut	50,332	2	133	Maine	30,305	42	80
Massachusetts	46,721	3	124	Kentucky	29,842	43	79
New York	46,617	4	124	Alabama	29,697	44	79
New Jersey	44,885	5	119	South Carolina	29,642	45	79
Alaska	43,748	6	116	Oklahoma	29,545	46	78
Colorado	41,798	7	111	Montana	27,942	47	74
Virginia	41,702	8	111	Arkansas	27,875	48	74
California	41,663	9	110	West Virginia	24,748	49	66
Minnesota	41,295	10	109	Mississippi	24,062	50	64

* Advance Estimates

Source: U.S. Bureau of Economic Analysis

Revisions to the Estimates for 2003-2005

Overall, the revisions had a moderate impact on relative growth across states. The first-time accelerated industry estimates for 2005, released October 26, 2006, indicated successfully whether a state's growth was high or low (relative to national growth) for nearly 80 percent of the states.

⁴ The private goods-producing sector consists of agriculture, forestry, fishing, and hunting; mining; construction; and manufacturing.

For 2003-2005, the annual revisions to percent change were less than or equal to three percentage points, in absolute terms. Many of the revisions were less than one percentage point.

The revisions to the GDP-by-state estimates for 2003-2005 incorporate new data from the U.S. Census Bureau, specifically the Annual Survey of Manufactures (ASM) for 2005 and the State and Local Government Finance data for 2004. These estimates also incorporate the annual revision to BEA's GDP-by-industry estimates released April 24, 2007 and state personal income estimates for 2003-2005 released March 27, 2007.

Tables 1-5 show these results in more detail; complete detail is available on BEA's Web site at www.bea.gov.

BEA's national, international, regional, and industry estimates; the *Survey of Current Business*; and BEA news releases are available without charge on BEA's Web site at www.bea.gov. By visiting the site, you can also subscribe to receive free e-mail summaries of BEA releases and announcements.

Advance Estimates of GDP by State for 2006 by NAICS Sector

The 2006 advance estimates are based primarily on preliminary earnings by industry estimates from BEA's regional economic accounts released March 27, 2007 and on the advance GDP-by-industry estimates from BEA's annual industry accounts released April 24, 2007. For the agriculture, forestry, fishing, and hunting and mining industries, research performed over the past year showed that, by incorporating alternative data sources, the accuracy of the advance estimates for these two industries was significantly improved. Hence, preliminary farm sector cash receipts data from the U.S. Department of Agriculture are incorporated in the agriculture, forestry, fishing, and hunting estimates; and preliminary value of production and price data from the U.S. Department of the Interior and the U.S. Department of Energy are incorporated in the mining estimates.

More information on the methodology used to produce the advance 2006 estimates, on the regular (revised) GDP-by-state estimates for 2003-2005, and on revisions to the GDP-by-state estimates will appear in an article in the July 2007 issue of the *Survey of Current Business*, BEA's monthly journal.

Explanatory Notes

Definitions

GDP by state is the state counterpart of the Nation's gross domestic product (GDP), the Bureau's featured and most comprehensive measure of U.S. economic

activity. GDP by state is derived as the sum of the GDP originating in all the industries in the state.

Real GDP by state is an inflation-adjusted measure based on national prices for the goods and services produced within that state. The estimates of real GDP by state and of quantity indexes with a base year of 2000 were derived by applying national implicit price deflators to the current-dollar GDP-by-state estimates for the 64 detailed NAICS-based industries for years 1997 forward and for the 63 detailed SIC-based industries for years 1977–1997. Then, the chain-type index formula that is used in the national accounts is used to calculate the estimates of total real GDP by state and of real GDP by state at more aggregated industry levels.

The relation of GDP by state to U.S. Gross Domestic Product (GDP)

An industry's GDP by state, or its value added, in practice, is calculated as the sum of incomes earned by labor and capital and the costs incurred in the production of goods and services. That is, it includes the wages and salaries that workers earn, the income earned by individual or joint entrepreneurs as well as by corporations, and business taxes such as sales, property, and Federal excise taxes—that count as a business expense.

GDP is calculated as the sum of what consumers, businesses, and government spend on final goods and services, plus investment and net foreign trade. In theory, incomes earned should equal what is spent, but due to different data sources, income earned, usually referred to as gross domestic income (GDI), does not always equal what is spent (GDP). The difference is referred to as the “statistical discrepancy.”

Starting with the 2004 comprehensive revision, BEA’s annual industry accounts and its GDP-by-state accounts allocate the statistical discrepancy across all private-sector industries. Therefore, GDP-by-state estimates are now conceptually more similar to GDP estimates in the national accounts than they had been in the past.

Except for small differences resulting from the GDP-by-state accounts excluding Federal military and civilian activity located overseas (because it cannot be attributed to a particular state), U.S. growth rates of real GDP by state are nearly identical to GDP-by-industry growth rates when these were originally published in December 2006. The GDP-by-industry growth rates are identical to those from the annual revision of the national income and product accounts (NIPAs) released in July 2006. Due to revisions since July 2006, the national rates of GDP growth in the NIPAs may differ from the U.S. growth rates of real GDP by state.

* * *

Table 1. Real GDP by State, 2003-2006

	Millions of chained (2000) dollars				Percent change				
	2003	2004	2005	2006*	2003	2004	2005	2006*	2006 Rank*
United States	10,225,679	10,608,934	10,923,951	11,291,375	2.4	3.7	3.0	3.4
New England	579,651	602,292	611,440	627,027	1.9	3.9	1.5	2.5
Connecticut	159,456	167,771	171,934	176,406	0.5	5.2	2.5	2.6	33
Maine	37,340	38,862	39,312	40,050	1.7	4.1	1.2	1.9	41
Massachusetts	280,881	289,295	292,225	300,753	2.1	3.0	1.0	2.9	27
New Hampshire	45,887	47,937	48,906	49,527	2.9	4.5	2.0	1.3	46
Rhode Island	36,488	37,964	38,065	38,746	4.5	4.0	0.3	1.8	43
Vermont	19,603	20,416	20,930	21,507	3.7	4.1	2.5	2.8	31
Mideast	1,894,359	1,958,445	2,008,846	2,067,624	2.3	3.4	2.6	2.9
Delaware	44,886	46,853	49,001	50,601	4.5	4.4	4.6	3.3	21
District of Columbia	64,660	67,503	69,470	72,321	2.9	4.4	2.9	4.1
Maryland	198,008	206,320	213,775	219,919	2.3	4.2	3.6	2.9	29
New Jersey	366,634	375,092	380,499	391,599	2.4	2.3	1.4	2.9	28
New York	808,396	841,744	870,010	899,993	2.1	4.1	3.4	3.4	18
Pennsylvania	411,599	420,786	426,032	433,280	2.1	2.2	1.2	1.7	44
Great Lakes	1,586,730	1,616,268	1,628,913	1,654,188	2.1	1.9	0.8	1.6
Illinois	479,293	488,016	492,341	507,037	2.8	1.8	0.9	3.0	26
Indiana	203,459	210,860	210,869	215,025	3.4	3.6	0.0	2.0	40
Michigan	341,109	338,274	339,507	337,885	1.3	-0.8	0.4	-0.5	50
Ohio	378,719	388,624	392,872	397,243	1.4	2.6	1.1	1.1	47
Wisconsin	184,139	190,371	193,162	196,642	2.1	3.4	1.5	1.8	42
Plains	667,363	687,949	704,451	723,342	2.6	3.1	2.4	2.7
Iowa	95,254	100,655	103,648	106,346	2.6	5.7	3.0	2.6	32
Kansas	86,726	88,913	91,508	94,647	1.7	2.5	2.9	3.4	19
Minnesota	196,738	204,767	207,436	213,377	2.9	4.1	1.3	2.9	30
Missouri	183,237	186,579	190,502	194,543	1.8	1.8	2.1	2.1	39
Nebraska	59,859	60,612	63,028	64,440	5.1	1.3	4.0	2.2	37
North Dakota	19,852	19,930	21,252	21,903	5.5	0.4	6.6	3.1	24
South Dakota	25,686	26,522	27,023	28,026	1.5	3.3	1.9	3.7	16
Southeast	2,246,725	2,339,013	2,432,518	2,514,158	2.9	4.1	4.0	3.4
Alabama	121,564	127,962	132,477	136,576	2.9	5.3	3.5	3.1	23
Arkansas	70,770	73,925	76,429	78,353	2.7	4.5	3.4	2.5	34
Florida	520,413	548,141	585,113	609,958	4.6	5.3	6.7	4.2	12
Georgia	299,661	310,020	320,364	331,129	1.9	3.5	3.3	3.4	20
Kentucky	117,239	120,100	122,763	125,517	1.5	2.4	2.2	2.2	36
Louisiana	131,862	138,608	138,815	141,167	1.6	5.1	0.1	1.7	45
Mississippi	66,556	67,978	68,345	70,032	3.1	2.1	0.5	2.5	35
North Carolina	286,400	296,090	310,152	323,163	1.4	3.4	4.7	4.2	14
South Carolina	119,631	120,282	123,738	128,090	3.4	0.5	2.9	3.5	17
Tennessee	188,517	196,760	201,141	207,257	2.9	4.4	2.2	3.0	25
Virginia	281,452	295,014	308,830	318,727	3.8	4.8	4.7	3.2	22
West Virginia	42,636	43,994	44,739	45,003	0.4	3.2	1.7	0.6	49
Southwest	1,093,130	1,143,484	1,182,397	1,241,674	2.0	4.6	3.4	5.0
Arizona	174,205	181,132	193,145	206,208	4.4	4.0	6.6	6.8	3
New Mexico	53,691	57,246	58,860	62,520	4.0	6.6	2.8	6.2	5
Oklahoma	94,331	97,094	99,084	105,748	1.5	2.9	2.0	6.7	4
Texas	770,975	808,088	831,785	867,918	1.4	4.8	2.9	4.3	10
Rocky Mountain	325,368	338,086	353,457	372,759	1.4	3.9	4.5	5.5
Colorado	176,525	181,582	189,470	198,683	0.6	2.9	4.3	4.9	8
Idaho	36,474	39,673	42,196	45,308	2.2	8.8	6.4	7.4	1
Montana	23,316	24,295	25,228	26,395	4.8	4.2	3.8	4.6	9
Utah	70,158	73,136	76,959	82,512	1.5	4.2	5.2	7.2	2
Wyoming	18,849	19,390	19,713	20,152	2.5	2.9	1.7	2.2	38
Far West	1,832,215	1,923,134	2,001,019	2,088,769	2.9	5.0	4.0	4.4
Alaska	27,402	28,558	29,112	29,314	-2.2	4.2	1.9	0.7	48
California	1,337,845	1,403,410	1,457,090	1,518,917	3.0	4.9	3.8	4.2	13
Hawaii	42,580	44,967	46,918	48,955	3.6	5.6	4.3	4.3	11
Nevada	81,581	89,137	95,418	99,356	5.8	9.3	7.0	4.1	15
Oregon	117,906	128,032	132,659	139,271	2.5	8.6	3.6	5.0	7
Washington	224,962	229,219	239,980	253,374	1.7	1.9	4.7	5.6	6

* Advance estimates

Source: U.S. Bureau of Economic Analysis

Table 2. Per Capita Real GDP by State, 2003-2006

	Dollars				Rank in the U.S.				Percent of the U.S.			
	2003	2004	2005	2006*	2003	2004	2005	2006*	2003	2004	2005	2006*
United States	35,164	36,129	36,842	37,714	100	100	100	100
New England	40,796	42,291	42,893	43,940	116	117	116	117
Connecticut	45,790	48,018	49,114	50,332	2	2	2	2	130	133	133	133
Maine	28,566	29,577	29,822	30,305	42	41	41	42	81	82	81	80
Massachusetts	43,618	44,950	45,423	46,721	3	3	3	3	124	124	123	124
New Hampshire	35,684	36,933	37,424	37,666	16	16	16	17	101	102	102	100
Rhode Island	33,949	35,186	35,456	36,292	22	20	22	22	97	97	96	96
Vermont	31,689	32,886	33,629	34,472	34	32	31	29	90	91	91	91
Mideast	40,200	41,399	42,347	43,509	114	115	115	115
Delaware	54,949	56,533	58,214	59,288	1	1	1	1	156	156	158	157
District of Columbia	111,971	116,441	119,354	124,363	318	322	324	330
Maryland	35,958	37,153	38,245	39,161	15	14	14	14	102	103	104	104
New Jersey	42,471	43,234	43,720	44,885	4	6	6	5	121	120	119	119
New York	42,020	43,633	45,042	46,617	6	4	4	4	119	121	122	124
Pennsylvania	33,324	33,996	34,343	34,828	26	27	27	27	95	94	93	92
Great Lakes	34,634	35,144	35,311	35,746	98	97	96	95
Illinois	37,889	38,386	38,568	39,514	10	11	13	13	108	106	105	105
Indiana	32,860	33,882	33,653	34,058	29	29	30	33	93	94	91	90
Michigan	33,880	33,514	33,612	33,468	23	30	32	35	96	93	91	89
Ohio	33,111	33,907	34,250	34,609	27	28	28	28	94	94	93	92
Wisconsin	33,682	34,620	34,945	35,390	24	24	25	25	96	96	95	94
Plains	34,094	34,935	35,568	36,272	97	97	97	96
Iowa	32,376	34,078	34,951	35,662	30	26	24	24	92	94	95	95
Kansas	31,802	32,469	33,298	34,242	33	33	34	32	90	90	90	91
Minnesota	38,889	40,195	40,462	41,295	7	7	9	10	111	111	110	109
Missouri	32,077	32,432	32,858	33,297	32	34	36	37	91	90	89	88
Nebraska	34,461	34,695	35,849	36,441	18	23	20	21	98	96	97	97
North Dakota	31,381	31,343	33,488	34,446	35	37	33	30	89	87	91	91
South Dakota	33,624	34,436	34,873	35,842	25	25	26	23	96	95	95	95
Southeast	31,206	32,046	32,842	33,546	89	89	89	89
Alabama	27,044	28,326	29,127	29,697	44	45	45	44	77	78	79	79
Arkansas	25,984	26,913	27,535	27,875	47	47	47	48	74	74	75	74
Florida	30,645	31,563	32,930	33,718	37	35	35	34	87	87	89	89
Georgia	34,246	34,697	35,079	35,362	19	22	23	26	97	96	95	94
Kentucky	28,494	29,007	29,421	29,842	43	42	43	43	81	80	80	79
Louisiana	29,427	30,831	30,798	32,923	39	38	39	38	84	85	84	87
Mississippi	23,156	23,500	23,498	24,062	50	50	50	50	66	65	64	64
North Carolina	34,032	34,707	35,763	36,489	21	21	21	20	97	96	97	97
South Carolina	28,880	28,675	29,136	29,642	40	43	44	45	82	79	79	79
Tennessee	32,312	33,431	33,773	34,321	31	31	29	31	92	93	92	91
Virginia	38,158	39,480	40,827	41,702	9	9	7	8	109	109	111	111
West Virginia	23,573	24,294	24,662	24,748	49	49	49	49	67	67	67	66
Southwest	33,027	33,944	34,421	35,267	94	94	93	94
Arizona	31,207	31,525	32,445	33,441	36	36	37	36	89	87	88	89
New Mexico	28,596	30,120	30,561	31,986	41	40	40	40	81	83	83	85
Oklahoma	26,918	27,561	27,963	29,545	45	46	46	46	77	76	76	78
Texas	34,832	35,886	36,277	36,920	17	17	19	19	99	99	98	98
Rocky Mountain	33,585	34,336	35,252	36,439	96	95	96	97
Colorado	38,831	39,487	40,630	41,798	8	8	8	7	110	109	110	111
Idaho	26,673	28,449	29,521	30,896	46	44	42	41	76	79	80	82
Montana	25,421	26,227	26,989	27,942	48	48	48	47	72	73	73	74
Utah	29,781	30,203	30,903	32,357	38	39	38	39	85	84	84	86
Wyoming	37,585	38,356	38,744	39,130	12	12	15	15	107	106	105	104
Far West	37,170	38,552	39,676	40,952	106	107	108	109
Alaska	42,304	43,478	43,893	43,748	5	5	5	6	120	120	119	116
California	37,722	39,156	40,302	41,663	11	10	10	9	107	108	109	110
Hawaii	34,184	35,708	36,848	38,083	20	18	17	16	97	99	100	101
Nevada	36,402	38,215	39,555	39,813	14	13	11	11	104	106	107	106
Oregon	33,109	35,672	36,456	37,633	28	19	18	18	94	99	99	100
Washington	36,697	36,938	38,141	39,616	13	15	15	12	104	102	104	105

* Advance estimates

Source: U.S. Bureau of Economic Analysis

Table 3. Contributions to Percent Change in Real GDP by State, 2005-2006*

State and region	Percent change in real GDP by state	Percentage points										
		Agriculture, forestry, fishing, and hunting	Mining	Utilities	Construction	Durable goods manufacturing	Nondurable goods manufacturing	Wholesale Trade	Retail Trade	Transportation and warehousing	Information	Finance and insurance
United States	3.4	0.05	-0.01	0.02	0.06	0.46	-0.05	0.10	0.27	0.05	0.32	0.34
New England	2.5	0.02	-0.01	-0.05	-0.18	0.41	0.02	0.22	0.10	0.00	0.22	0.17
Connecticut	2.6	0.01	-0.01	-0.23	-0.24	0.34	-0.02	0.18	0.18	0.01	0.18	0.24
Maine	1.9	0.19	0.00	-0.05	-0.09	0.17	0.05	0.00	0.25	0.00	0.12	0.07
Massachusetts	2.9	0.00	-0.01	0.02	-0.15	0.53	0.04	0.37	-0.01	-0.01	0.32	0.18
New Hampshire	1.3	0.01	-0.02	0.03	-0.33	0.37	0.03	-0.07	0.20	-0.01	0.10	0.08
Rhode Island	1.8	0.02	-0.01	0.07	-0.02	-0.02	0.01	-0.08	0.11	0.05	-0.03	-0.01
Vermont	2.8	-0.07	-0.11	-0.06	-0.17	0.59	-0.03	0.14	0.32	-0.04	0.19	0.13
Midwest	2.9	0.00	-0.04	-0.04	-0.03	0.11	-0.05	-0.03	0.19	0.04	0.42	0.80
Delaware	3.3	-0.04	(d)	0.07	(d)	0.29	-0.28	0.36	0.13	-0.02	0.13	0.60
District of Columbia	4.1	0.00	(d)	0.04	(d)	-0.02	-0.03	-0.02	0.07	-0.02	-0.03	0.22
Maryland	2.9	0.00	0.00	0.02	-0.04	0.03	0.01	-0.01	0.21	0.05	0.22	-0.03
New Jersey	2.9	0.01	-0.02	0.02	0.01	0.15	0.11	-0.12	0.15	0.03	0.44	0.46
New York	3.4	0.00	-0.01	0.01	-0.07	0.14	-0.12	-0.03	0.22	0.04	0.59	1.46
Pennsylvania	1.7	0.02	-0.13	-0.26	0.00	0.07	-0.05	0.01	0.15	0.07	0.25	0.32
Great Lakes	1.6	0.02	0.00	0.02	-0.19	0.32	-0.02	0.01	0.13	0.09	0.13	0.22
Illinois	3.0	-0.01	-0.01	0.00	0.02	0.30	0.30	0.10	0.19	0.20	0.19	0.40
Indiana	2.0	0.05	0.02	0.06	-0.20	0.46	0.34	0.07	0.22	0.09	0.11	0.08
Michigan	-0.5	0.03	0.04	0.03	-0.48	0.17	-0.12	-0.12	0.05	-0.09	0.13	0.05
Ohio	1.1	0.03	-0.02	0.04	-0.20	0.36	-0.16	-0.05	0.06	0.16	0.07	0.22
Wisconsin	1.8	0.02	-0.02	-0.02	-0.21	0.44	0.02	0.05	0.15	-0.01	0.17	0.22
Plains	2.7	0.18	-0.06	0.03	-0.08	0.38	0.10	0.03	0.19	-0.07	0.23	0.31
Iowa	2.6	0.25	-0.03	-0.05	0.12	0.37	0.10	-0.01	0.20	0.07	0.26	0.50
Kansas	3.4	0.24	-0.22	0.09	0.02	0.58	0.14	-0.03	0.29	-0.03	0.47	0.20
Minnesota	2.9	0.13	0.06	0.00	-0.27	0.34	-0.08	0.14	0.09	-0.28	0.05	0.34
Missouri	2.1	-0.01	-0.11	0.08	-0.08	0.27	0.27	-0.01	0.24	0.03	0.38	0.16
Nebraska	2.2	0.46	-0.03	0.06	-0.10	0.47	0.11	-0.05	0.17	-0.14	-0.02	0.17
North Dakota	3.1	0.66	-0.13	-0.07	0.13	0.35	0.04	0.06	0.37	0.04	0.18	0.24
South Dakota	3.7	0.38	-0.13	0.04	0.07	0.57	0.25	0.00	0.23	0.14	0.31	1.11
Southeast	3.4	0.02	-0.01	0.01	0.20	0.37	-0.12	0.13	0.39	0.02	0.26	0.29
Alabama	3.1	-0.01	-0.28	0.10	0.01	1.02	-0.08	0.12	0.33	0.04	0.13	0.23
Arkansas	2.5	0.00	-0.06	-0.05	-0.07	0.06	-0.02	0.15	0.33	0.01	0.42	0.16
Florida	4.2	0.04	-0.03	-0.08	0.49	0.31	0.01	0.19	0.44	0.07	0.28	0.23
Georgia	3.4	-0.01	-0.08	0.01	-0.05	0.33	0.19	0.09	0.36	-0.08	0.49	0.23
Kentucky	2.2	0.09	0.11	0.07	-0.26	0.32	0.08	-0.04	0.21	-0.12	0.27	0.31
Louisiana	1.7	0.05	0.98	-0.08	0.64	0.49	-1.54	0.11	0.63	0.12	0.08	-0.05
Mississippi	2.5	-0.02	-0.02	-0.17	0.49	0.23	-0.34	0.32	0.78	0.05	0.09	0.09
North Carolina	4.2	-0.02	-0.04	-0.02	0.17	0.44	-0.12	0.12	0.30	0.02	0.24	1.16
South Carolina	3.5	0.03	-0.02	0.14	0.30	0.33	-0.19	0.34	0.40	0.04	0.35	0.44
Tennessee	3.0	0.04	-0.04	0.02	0.08	0.53	-0.05	0.07	0.40	0.09	0.29	0.21
Virginia	3.2	0.01	0.03	0.12	0.01	0.20	-0.02	0.08	0.27	0.00	0.13	-0.12
West Virginia	0.6	0.03	-1.83	0.43	0.29	-0.14	-0.21	0.14	0.31	-0.09	0.17	0.15
Southwest	5.0	0.03	-0.11	0.08	0.39	0.94	-0.04	0.21	0.40	0.11	0.31	0.32
Arizona	6.8	0.03	0.19	0.14	0.66	0.87	0.06	0.17	0.72	0.14	0.16	0.42
New Mexico	6.2	0.09	0.98	0.13	0.27	1.72	0.03	0.13	0.25	0.05	0.39	0.05
Oklahoma	6.7	0.01	2.10	0.17	0.13	0.77	-0.03	0.23	0.34	0.05	0.17	0.20
Texas	4.3	0.03	-0.52	0.05	0.37	0.93	-0.07	0.22	0.35	0.11	0.36	0.33
Rocky Mountain	5.5	0.09	0.31	0.26	0.35	0.56	0.04	0.17	0.41	0.11	0.58	0.29
Colorado	4.9	0.04	0.57	0.39	0.00	0.26	-0.01	0.16	0.21	0.13	0.92	0.21
Idaho	7.4	0.32	0.15	0.07	0.70	2.31	0.21	0.13	0.81	0.10	0.15	0.41
Montana	4.6	0.20	0.49	0.26	0.24	0.15	-0.02	0.08	0.40	0.00	0.26	0.29
Utah	7.2	0.05	0.46	0.09	0.89	0.66	0.11	0.18	0.69	0.05	0.22	0.48
Wyoming	2.2	0.05	-2.19	0.07	0.91	0.12	0.00	0.31	0.41	0.27	0.13	0.08
Far West	4.4	0.11	0.00	0.06	0.06	0.75	-0.09	0.19	0.32	0.08	0.44	0.11
Alaska	0.7	0.00	-0.67	-0.01	-0.45	0.02	-0.01	0.02	0.21	-0.28	0.13	0.14
California	4.2	0.11	0.02	0.06	-0.02	0.67	-0.13	0.23	0.29	0.09	0.42	0.10
Hawaii	4.3	0.02	-0.01	0.08	0.09	0.03	0.01	0.01	0.45	0.14	0.25	0.06
Nevada	4.1	0.01	-0.01	-0.01	0.54	0.26	0.10	0.19	0.46	0.21	-0.13	-0.35
Oregon	5.0	0.14	-0.03	0.08	0.30	1.99	0.10	0.04	0.37	0.10	0.35	0.28
Washington	5.6	0.20	0.00	0.05	0.28	1.01	-0.02	0.09	0.47	0.05	0.92	0.23

* Advance estimates

(d) Data are suppressed to avoid disclosure of confidential information.

Source: U.S. Bureau of Economic Analysis

Table 3. Contributions to Percent Change in Real GDP by State, 2005-2006* (continued)

State and region	Percentage points									
	Real estate, rental, and leasing	Professional and technical services	Management of companies	Administrative and waste services	Educational services	Health care and social assistance	Arts, entertainment, and recreation	Accommodation and food services	Other services	Government
United States	0.77	0.36	0.01	0.14	0.02	0.24	0.03	0.07	0.02	0.09
New England	0.65	0.42	0.02	0.11	0.01	0.30	0.00	0.03	0.00	0.10
Connecticut	0.86	0.25	0.17	0.13	0.04	0.18	0.02	0.04	0.02	0.25
Maine	0.39	0.16	0.01	0.11	0.00	0.31	0.02	0.08	-0.04	0.11
Massachusetts	0.67	0.48	-0.04	0.11	-0.01	0.36	-0.02	0.04	0.01	0.05
New Hampshire	-0.03	0.57	-0.26	0.16	0.02	0.34	0.01	0.01	0.01	0.04
Rhode Island	0.81	0.70	0.27	0.04	0.01	0.13	0.02	-0.01	-0.03	-0.26
Vermont	0.29	0.67	-0.01	0.03	0.06	0.62	0.04	0.00	-0.01	0.20
Mideast	0.87	0.35	0.07	0.03	0.02	0.19	0.03	0.05	0.02	-0.08
Delaware	0.53	-0.15	0.52	0.11	0.08	0.15	0.01	0.04	0.08	0.52
District of Columbia	1.51	1.12	0.15	0.10	0.05	0.03	0.03	0.04	0.13	0.77
Maryland	1.12	0.50	0.01	0.10	-0.01	0.25	0.02	0.02	0.04	0.36
New Jersey	1.16	0.44	-0.05	-0.02	0.01	0.22	0.05	0.06	0.03	-0.23
New York	0.81	0.27	0.05	0.04	0.02	0.13	0.03	0.06	0.02	-0.21
Pennsylvania	0.53	0.27	0.17	0.02	0.02	0.30	0.02	0.02	-0.03	-0.10
Great Lakes	0.52	0.16	-0.03	0.06	0.02	0.19	0.02	0.03	-0.01	-0.15
Illinois	0.89	0.30	0.03	0.13	0.03	0.18	0.01	0.08	0.01	-0.02
Indiana	0.43	0.10	-0.04	0.09	0.03	0.18	0.01	0.04	0.02	-0.18
Michigan	0.19	-0.06	-0.18	-0.07	0.00	0.18	0.01	0.01	-0.05	-0.20
Ohio	0.32	0.21	-0.02	0.07	0.02	0.22	0.02	0.00	-0.03	-0.22
Wisconsin	0.63	0.16	0.05	0.09	0.02	0.19	0.06	0.03	-0.01	-0.24
Plains	0.62	0.24	-0.05	0.11	0.03	0.26	0.05	0.04	0.00	0.13
Iowa	0.31	0.13	0.01	0.10	0.00	0.11	0.05	0.03	0.02	0.08
Kansas	0.40	0.24	0.18	0.36	0.01	0.18	0.02	0.05	-0.02	0.27
Minnesota	1.18	0.27	-0.06	0.07	0.03	0.53	0.07	0.06	0.03	0.16
Missouri	0.46	0.24	-0.22	0.05	0.05	0.15	0.05	0.01	0.00	0.12
Nebraska	0.40	0.31	0.04	0.12	0.03	0.19	0.02	0.00	-0.04	0.05
North Dakota	0.44	0.37	0.12	0.10	0.02	-0.06	0.00	0.04	-0.04	0.21
South Dakota	0.19	0.15	-0.04	0.08	0.02	0.28	0.01	0.05	0.02	-0.01
Southeast	0.73	0.33	-0.01	0.21	0.02	0.21	0.01	0.07	0.02	0.19
Alabama	0.38	0.35	0.04	0.04	0.01	0.23	0.01	0.05	-0.03	0.39
Arkansas	0.56	0.18	-0.01	0.06	0.02	0.20	0.01	0.07	0.04	0.48
Florida	0.89	0.35	0.03	0.47	0.03	0.31	0.03	0.09	0.03	0.06
Georgia	1.08	0.34	-0.31	0.07	0.07	0.15	0.00	0.10	0.00	0.37
Kentucky	0.43	0.13	0.03	0.14	-0.02	0.14	0.00	0.04	0.04	0.28
Louisiana	0.86	0.11	-0.10	0.42	-0.05	-0.20	-0.19	-0.01	0.02	-0.62
Mississippi	0.54	0.17	0.09	0.27	0.01	0.32	-0.14	-0.30	0.04	-0.02
North Carolina	0.69	0.31	0.10	0.15	0.05	0.22	0.08	0.07	0.01	0.27
South Carolina	0.77	0.18	0.02	-0.01	0.00	0.23	-0.01	0.13	-0.03	0.10
Tennessee	0.52	0.17	0.07	0.15	0.02	0.25	0.09	0.08	0.02	0.04
Virginia	0.54	0.75	0.07	0.10	0.02	0.22	0.03	0.09	0.05	0.62
West Virginia	0.81	0.13	0.05	0.06	0.01	0.33	0.00	0.04	-0.02	-0.08
Southwest	0.74	0.47	0.10	0.26	0.01	0.28	0.06	0.12	0.05	0.26
Arizona	1.08	0.47	0.04	0.32	0.03	0.58	0.09	0.18	0.09	0.32
New Mexico	0.70	1.18	0.01	0.12	0.03	0.34	0.00	0.11	0.04	-0.39
Oklahoma	0.88	0.15	0.29	0.21	0.01	0.24	0.14	0.08	0.03	0.55
Texas	0.65	0.46	0.09	0.27	0.01	0.22	0.05	0.12	0.05	0.25
Rocky Mountain	0.71	0.52	0.09	0.17	0.02	0.36	0.06	0.14	0.08	0.14
Colorado	0.62	0.57	0.06	0.13	0.02	0.25	0.04	0.08	0.04	0.17
Idaho	0.93	0.40	0.25	0.28	-0.03	0.36	0.11	0.16	0.10	-0.53
Montana	0.48	0.21	0.03	0.26	0.04	0.54	0.14	0.12	-0.11	0.58
Utah	1.01	0.66	0.11	0.23	0.05	0.62	0.07	0.18	0.18	0.21
Wyoming	0.43	0.25	0.08	0.11	0.01	0.16	0.02	0.43	0.25	0.33
Far West	1.02	0.51	-0.03	0.18	0.01	0.28	0.04	0.10	0.02	0.22
Alaska	0.37	0.10	0.04	0.02	0.00	0.32	0.00	0.02	0.01	0.70
California	1.04	0.61	-0.03	0.18	0.01	0.29	0.05	0.08	0.02	0.18
Hawaii	1.03	0.20	-0.13	0.23	0.02	0.29	0.00	0.24	0.06	1.24
Nevada	1.38	0.52	-0.31	0.23	0.02	0.21	0.12	0.19	0.11	0.41
Oregon	0.61	0.17	-0.08	0.14	0.02	0.26	0.02	0.09	0.03	0.00
Washington	1.03	0.21	0.15	0.20	0.01	0.25	0.04	0.18	0.02	0.22

* Advance estimates

Source: U.S. Bureau of Economic Analysis

Table 4. Revisions to Percent Change in Real GDP by State

	2003			2004			2005		
	Previously Published	Revised	Difference (percentage points)	Previously Published	Revised	Difference (percentage points)	Previously Published	Revised	Difference (percentage points)
United States	2.6	2.4	-0.2	4.2	3.7	-0.5	3.6	3.0	-0.6
New England	2.3	1.9	-0.4	4.1	3.9	-0.2	2.3	1.5	-0.8
Connecticut	0.7	0.5	-0.2	4.4	5.2	0.8	3.2	2.5	-0.7
Maine	1.9	1.7	-0.2	4.7	4.1	-0.6	1.3	1.2	-0.1
Massachusetts	2.7	2.1	-0.6	3.6	3.0	-0.6	1.7	1.0	-0.7
New Hampshire	3.3	2.9	-0.4	5.4	4.5	-0.9	3.2	2.0	-1.2
Rhode Island	4.4	4.5	0.1	3.7	4.0	0.3	2.0	0.3	-1.7
Vermont	3.7	3.7	0.0	4.5	4.1	-0.4	2.7	2.5	-0.2
Mideast	1.9	2.3	0.4	3.9	3.4	-0.5	2.9	2.6	-0.3
Delaware	4.0	4.5	0.5	5.2	4.4	-0.8	5.4	4.6	-0.8
District of Columbia	2.3	2.9	0.6	4.7	4.4	-0.3	3.6	2.9	-0.7
Maryland	2.9	2.3	-0.6	4.7	4.2	-0.5	4.2	3.6	-0.6
New Jersey	2.3	2.4	0.1	3.1	2.3	-0.8	2.1	1.4	-0.7
New York	1.4	2.1	0.7	4.5	4.1	-0.4	2.9	3.4	0.5
Pennsylvania	1.8	2.1	0.3	2.7	2.2	-0.5	2.4	1.2	-1.2
Great Lakes	2.5	2.1	-0.4	2.0	1.9	-0.1	1.3	0.8	-0.5
Illinois	2.6	2.8	0.2	2.2	1.8	-0.4	2.1	0.9	-1.2
Indiana	4.1	3.4	-0.7	3.4	3.6	0.2	1.3	0.0	-1.3
Michigan	2.4	1.3	-1.1	-0.7	-0.8	-0.1	0.2	0.4	0.2
Ohio	1.6	1.4	-0.2	3.0	2.6	-0.4	0.9	1.1	0.2
Wisconsin	2.5	2.1	-0.4	3.1	3.4	0.3	1.5	1.5	0.0
Plains	2.9	2.6	-0.3	3.4	3.1	-0.3	2.3	2.4	0.1
Iowa	3.0	2.6	-0.4	4.4	5.7	1.3	1.0	3.0	2.0
Kansas	1.3	1.7	0.4	3.2	2.5	-0.7	3.9	2.9	-1.0
Minnesota	3.6	2.9	-0.7	4.6	4.1	-0.5	1.9	1.3	-0.6
Missouri	2.0	1.8	-0.2	2.6	1.8	-0.8	2.3	2.1	-0.2
Nebraska	5.5	5.1	-0.4	1.1	1.3	0.2	1.9	4.0	2.1
North Dakota	5.8	5.5	-0.3	0.3	0.4	0.1	5.3	6.6	1.3
South Dakota	1.6	1.5	-0.1	3.9	3.3	-0.6	2.9	1.9	-1.0
Southeast	3.0	2.9	-0.1	4.7	4.1	-0.6	4.6	4.0	-0.6
Alabama	3.2	2.9	-0.3	5.1	5.3	0.2	4.5	3.5	-1.0
Arkansas	2.7	2.7	0.0	6.0	4.5	-1.5	2.4	3.4	1.0
Florida	4.3	4.6	0.3	6.5	5.3	-1.2	7.7	6.7	-1.0
Georgia	1.8	1.9	0.1	4.6	3.5	-1.1	4.6	3.3	-1.3
Kentucky	2.4	1.5	-0.9	3.0	2.4	-0.6	3.0	2.2	-0.8
Louisiana	1.5	1.6	0.1	4.5	5.1	0.6	-1.5	0.1	1.6
Mississippi	3.6	3.1	-0.5	2.9	2.1	-0.8	2.5	0.5	-2.0
North Carolina	2.2	1.4	-0.8	2.8	3.4	0.6	4.7	4.7	0.0
South Carolina	3.1	3.4	0.3	0.6	0.5	-0.1	3.9	2.9	-1.0
Tennessee	3.6	2.9	-0.7	5.3	4.4	-0.9	3.1	2.2	-0.9
Virginia	3.7	3.8	0.1	5.8	4.8	-1.0	5.4	4.7	-0.7
West Virginia	1.0	0.4	-0.6	3.3	3.2	-0.1	2.1	1.7	-0.4
Southwest	2.1	2.0	-0.1	4.9	4.6	-0.3	5.2	3.4	-1.8
Arizona	4.7	4.4	-0.3	4.2	4.0	-0.2	9.1	6.6	-2.5
New Mexico	4.0	4.0	0.0	6.6	6.6	0.0	3.7	2.8	-0.9
Oklahoma	2.0	1.5	-0.5	3.3	2.9	-0.4	3.3	2.0	-1.3
Texas	1.4	1.4	0.0	5.1	4.8	-0.3	4.7	2.9	-1.8
Rocky Mountain	2.2	1.4	-0.8	4.9	3.9	-1.0	5.2	4.5	-0.7
Colorado	1.4	0.6	-0.8	3.9	2.9	-1.0	4.3	4.3	0.0
Idaho	3.1	2.2	-0.9	10.1	8.8	-1.3	7.4	6.4	-1.0
Montana	4.7	4.8	0.1	3.8	4.2	0.4	5.2	3.8	-1.4
Utah	2.7	1.5	-1.2	5.5	4.2	-1.3	6.8	5.2	-1.6
Wyoming	3.2	2.5	-0.7	3.7	2.9	-0.8	3.8	1.7	-2.1
Far West	3.0	2.9	-0.1	5.3	5.0	-0.3	4.4	4.0	-0.4
Alaska	-1.1	-2.2	-1.1	7.2	4.2	-3.0	-0.5	1.9	2.4
California	3.2	3.0	-0.2	5.2	4.9	-0.3	4.3	3.8	-0.5
Hawaii	3.6	3.6	0.0	5.0	5.6	0.6	5.3	4.3	-1.0
Nevada	7.4	5.8	-1.6	7.8	9.3	1.5	9.0	7.0	-2.0
Oregon	1.6	2.5	0.9	9.6	8.6	-1.0	5.9	3.6	-2.3
Washington	1.5	1.7	0.2	2.8	1.9	-0.9	3.2	4.7	1.5
Mean	2.8	2.6	-0.2	4.2	3.9	-0.4	3.5	2.9	-0.6
Absolute Mean	2.9	2.7	0.4	4.3	3.9	0.7	3.6	2.9	1.1

Source: U.S. Bureau of Economic Analysis

Table 5. Current-Dollar GDP by State, 2003-2006

	Millions of dollars				Percent of U.S. total			
	2003	2004	2005	2006*	2003	2004	2005	2006*
United States	10,886,172	11,633,572	12,372,850	13,149,033	100.0	100.0	100.0	100.0
New England	612,006	652,357	679,249	714,826	5.6	5.6	5.5	5.4
Connecticut	169,885	183,873	193,496	204,134	1.6	1.6	1.6	1.6
Maine	40,152	43,131	44,906	46,973	0.4	0.4	0.4	0.4
Massachusetts	293,840	309,483	320,050	337,570	2.7	2.7	2.6	2.6
New Hampshire	48,198	51,656	54,119	56,276	0.4	0.4	0.4	0.4
Rhode Island	39,357	42,213	43,623	45,660	0.4	0.4	0.4	0.3
Vermont	20,575	22,002	23,056	24,213	0.2	0.2	0.2	0.2
Mideast	2,013,636	2,141,324	2,258,984	2,391,253	18.5	18.4	18.3	18.2
Delaware	48,587	52,454	56,731	60,361	0.4	0.5	0.5	0.5
District of Columbia	71,719	77,782	82,628	87,664	0.7	0.7	0.7	0.7
Maryland	213,306	229,158	244,447	257,815	2.0	2.0	2.0	2.0
New Jersey	389,077	409,156	427,654	453,177	3.6	3.5	3.5	3.4
New York	850,243	908,308	961,385	1,021,944	7.8	7.8	7.8	7.8
Pennsylvania	440,704	464,467	486,139	510,293	4.0	4.0	3.9	3.9
Great Lakes	1,683,064	1,760,193	1,823,333	1,908,049	15.5	15.1	14.7	14.5
Illinois	510,296	534,364	555,599	589,598	4.7	4.6	4.5	4.5
Indiana	215,434	229,618	236,357	248,915	2.0	2.0	1.9	1.9
Michigan	359,030	363,380	372,148	381,003	3.3	3.1	3.0	2.9
Ohio	402,399	424,562	442,243	461,302	3.7	3.6	3.6	3.5
Wisconsin	195,904	208,269	216,985	227,230	1.8	1.8	1.8	1.7
Plains	713,213	758,323	797,093	840,506	6.6	6.5	6.4	6.4
Iowa	102,210	111,626	117,635	123,970	0.9	1.0	1.0	0.9
Kansas	93,560	99,125	105,228	111,699	0.9	0.9	0.9	0.8
Minnesota	208,179	222,628	231,437	244,546	1.9	1.9	1.9	1.9
Missouri	195,547	204,733	215,073	225,876	1.8	1.8	1.7	1.7
Nebraska	64,628	67,976	72,242	75,700	0.6	0.6	0.6	0.6
North Dakota	21,672	22,715	24,935	26,385	0.2	0.2	0.2	0.2
South Dakota	27,418	29,519	30,541	32,330	0.3	0.3	0.2	0.2
Southeast	2,409,888	2,586,036	2,781,655	2,955,468	22.1	22.2	22.5	22.5
Alabama	130,210	141,702	151,342	160,569	1.2	1.2	1.2	1.2
Arkansas	75,685	81,752	87,004	91,837	0.7	0.7	0.7	0.7
Florida	559,021	607,201	666,639	713,505	5.1	5.2	5.4	5.4
Georgia	317,922	337,622	358,365	379,550	2.9	2.9	2.9	2.9
Kentucky	124,892	131,839	138,616	145,959	1.1	1.1	1.1	1.1
Louisiana	146,726	162,646	180,336	193,138	1.3	1.4	1.5	1.5
Mississippi	72,259	76,534	79,786	84,225	0.7	0.7	0.6	0.6
North Carolina	306,018	324,622	350,700	374,525	2.8	2.8	2.8	2.8
South Carolina	127,885	132,348	140,088	149,214	1.2	1.1	1.1	1.1
Tennessee	200,279	214,400	224,995	238,029	1.8	1.8	1.8	1.8
Virginia	302,540	325,467	350,692	369,260	2.8	2.8	2.8	2.8
West Virginia	46,452	49,903	53,091	55,658	0.4	0.4	0.4	0.4
Southwest	1,171,729	1,273,807	1,392,895	1,508,916	10.8	10.9	11.3	11.5
Arizona	182,011	194,134	212,312	232,463	1.7	1.7	1.7	1.8
New Mexico	57,469	63,861	69,692	75,910	0.5	0.5	0.6	0.6
Oklahoma	103,452	111,400	121,558	134,651	1.0	1.0	1.0	1.0
Texas	828,797	904,412	989,333	1,065,891	7.6	7.8	8.0	8.1
Rocky Mountain	348,184	373,829	405,753	440,018	3.2	3.2	3.3	3.3
Colorado	187,397	198,407	214,337	230,478	1.7	1.7	1.7	1.8
Idaho	38,148	42,697	45,891	49,907	0.4	0.4	0.4	0.4
Montana	25,526	27,790	29,915	32,322	0.2	0.2	0.2	0.2
Utah	75,428	81,059	88,364	97,749	0.7	0.7	0.7	0.7
Wyoming	21,685	23,876	27,246	29,561	0.2	0.2	0.2	0.2
Far West	1,934,451	2,087,703	2,233,889	2,389,998	17.8	17.9	18.1	18.2
Alaska	31,219	34,729	39,394	41,105	0.3	0.3	0.3	0.3
California	1,406,511	1,515,453	1,616,351	1,727,355	12.9	13.0	13.1	13.1
Hawaii	46,441	50,781	54,773	58,307	0.4	0.4	0.4	0.4
Nevada	87,828	99,342	110,158	118,399	0.8	0.9	0.9	0.9
Oregon	121,638	135,014	141,831	151,301	1.1	1.2	1.1	1.2
Washington	240,813	252,384	271,381	293,531	2.2	2.2	2.2	2.2

* Advance estimates

Source: U.S. Bureau of Economic Analysis